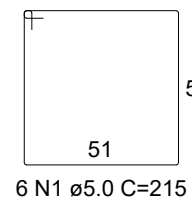
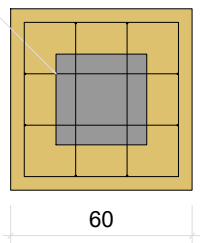
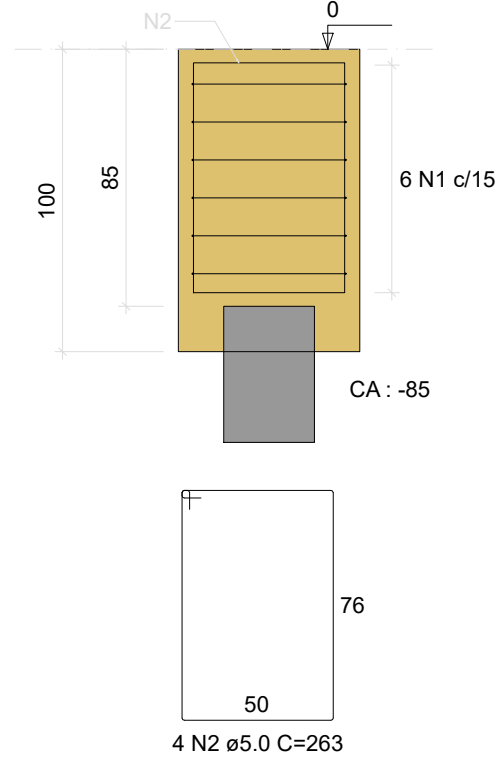


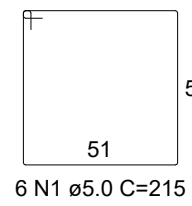
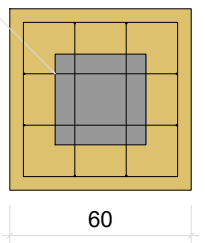
BII-P1
1xR30
PLANTA
ESC 1:25



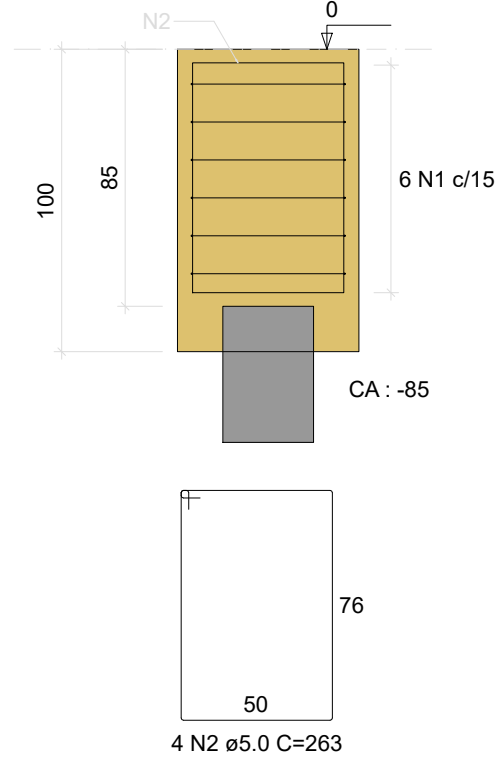
CORTE
ESC 1:25



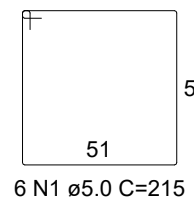
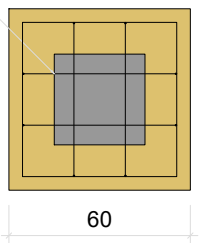
BII-P2
1xR30
PLANTA
ESC 1:25



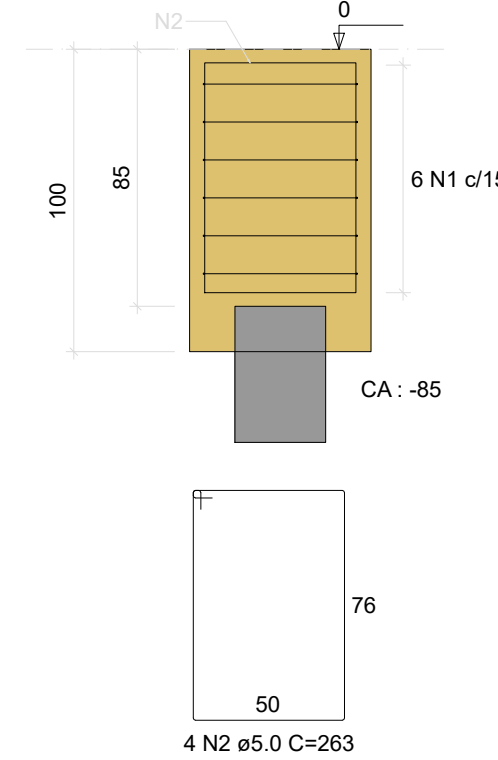
CORTE
ESC 1:25



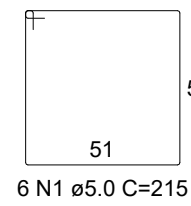
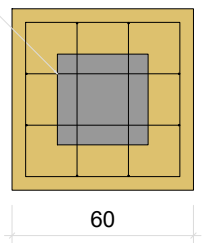
BII-P3
1xR30
PLANTA
ESC 1:25



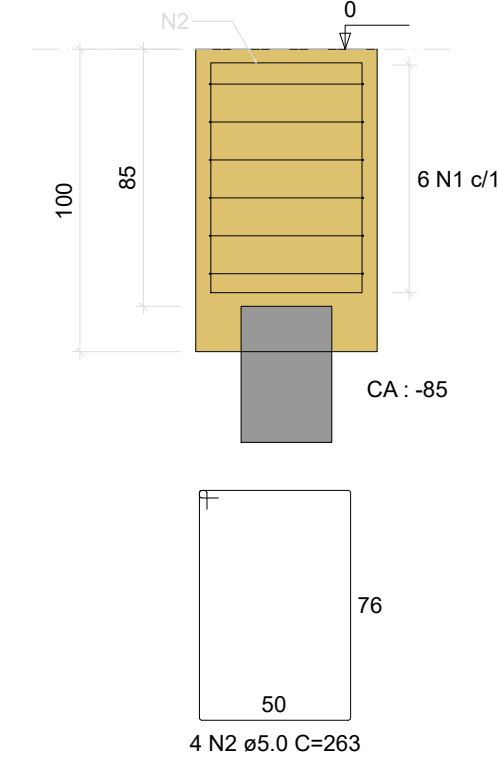
CORTE
ESC 1:25



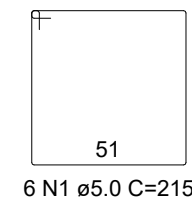
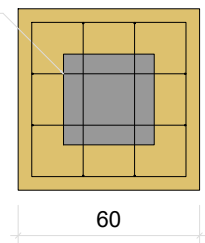
BII-P4
1xR30
PLANTA
ESC 1:25



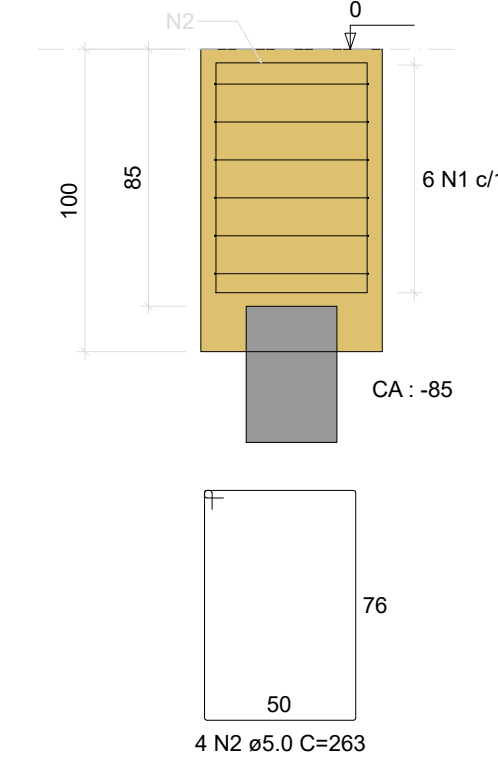
CORTE
ESC 1:25



BII-P5
1xR30
PLANTA
ESC 1:25



CORTE
ESC 1:25

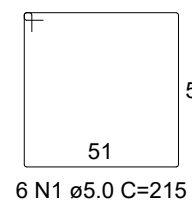
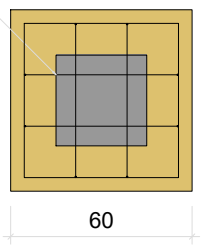


RELAÇÃO DO AÇO					
AÇO	N	DIAM (mm)	QUANT	C.UNIT (cm)	C.TOTAL (cm)
CA60	1	5.0	120	215	25800
	2	5.0	80	263	21040

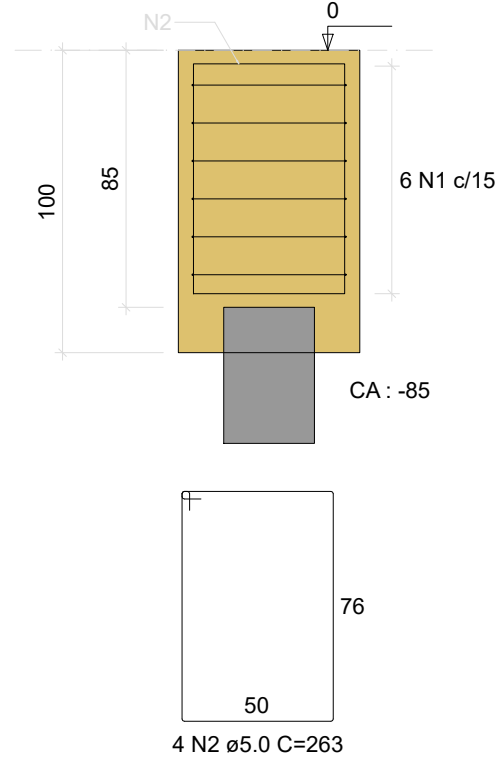
RESUMO DO AÇO			
AÇO	DIAM (mm)	C.TOTAL (m)	PESO + 10% (kg)
CA60	5.0	488.4	79.4
PESO TOTAL (kg)			
CA60		79.4	

Volume de concreto (C-25) = 6.93 m³
Área de forma = 48.00 m²

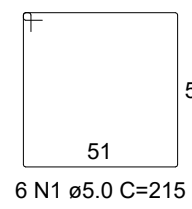
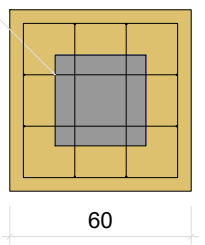
BII-P6
1xR30
PLANTA
ESC 1:25



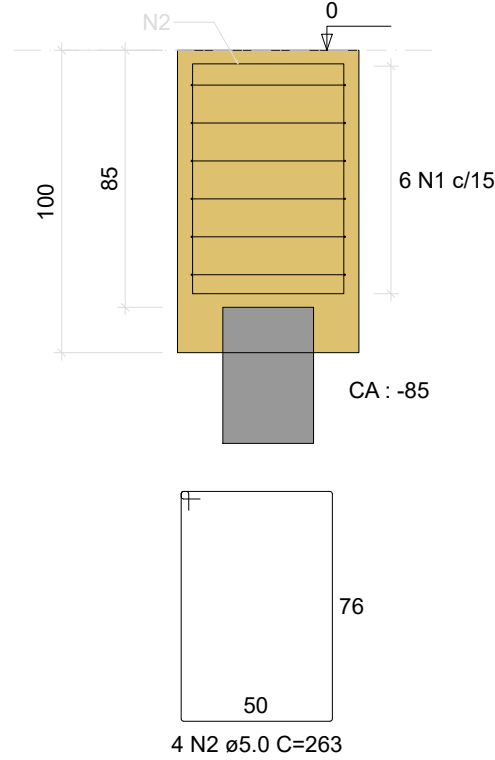
CORTE
ESC 1:25



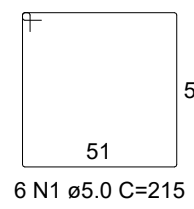
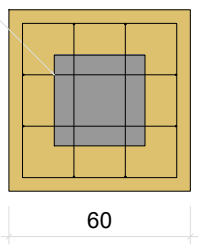
BII-P7
1xR30
PLANTA
ESC 1:25



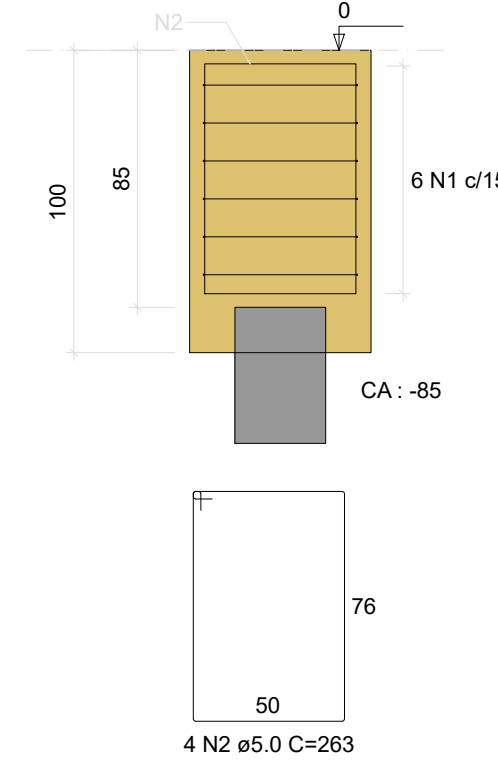
CORTE
ESC 1:25



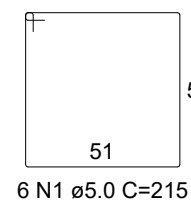
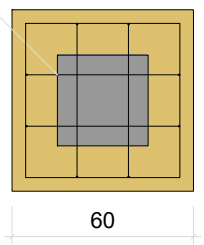
BII-P8
1xR30
PLANTA
ESC 1:25



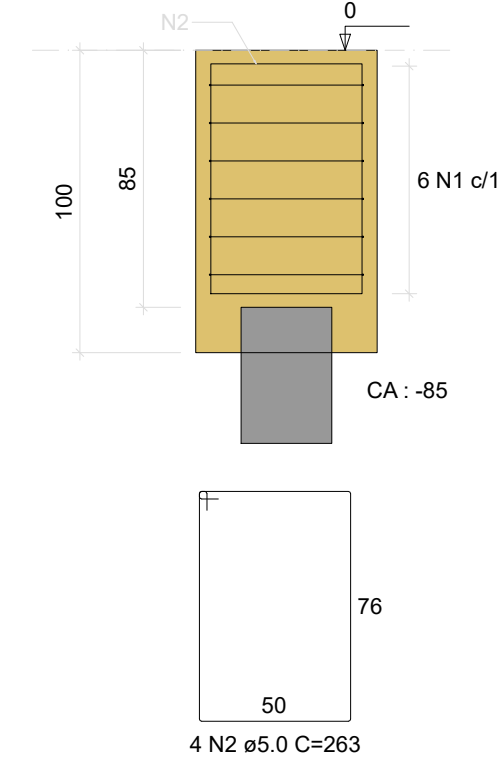
CORTE
ESC 1:25



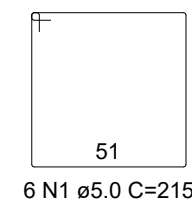
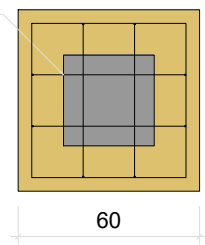
BII-P9
1xR30
PLANTA
ESC 1:25



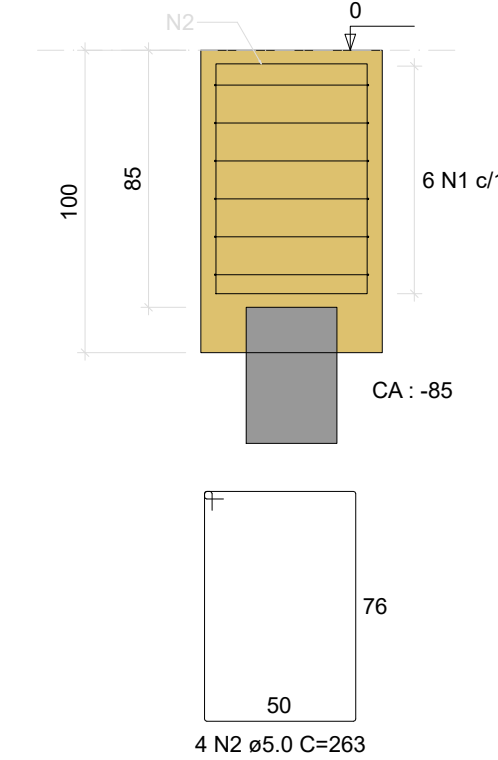
CORTE
ESC 1:25



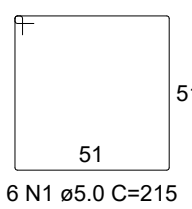
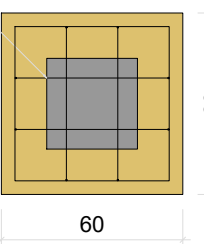
BII-P10
1xR30
PLANTA
ESC 1:25



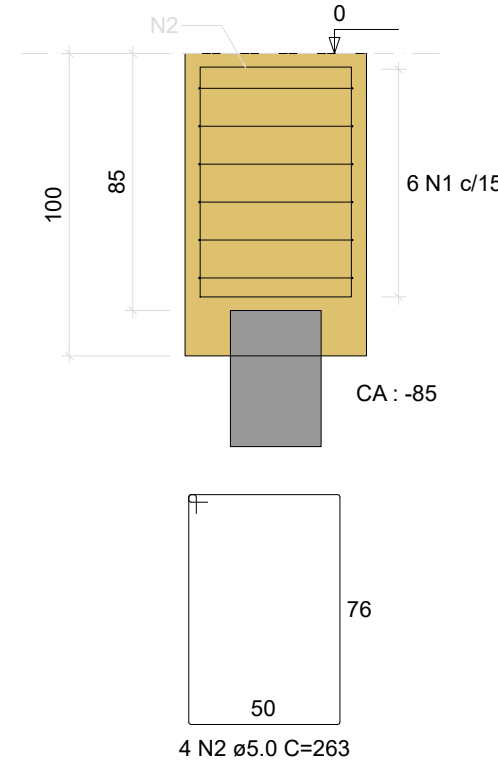
CORTE
ESC 1:25



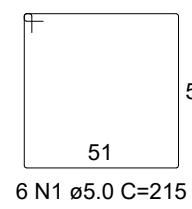
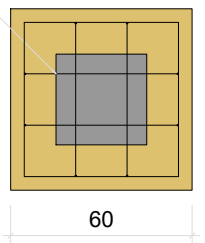
BII-P20
1xR30
PLANTA
ESC 1:25



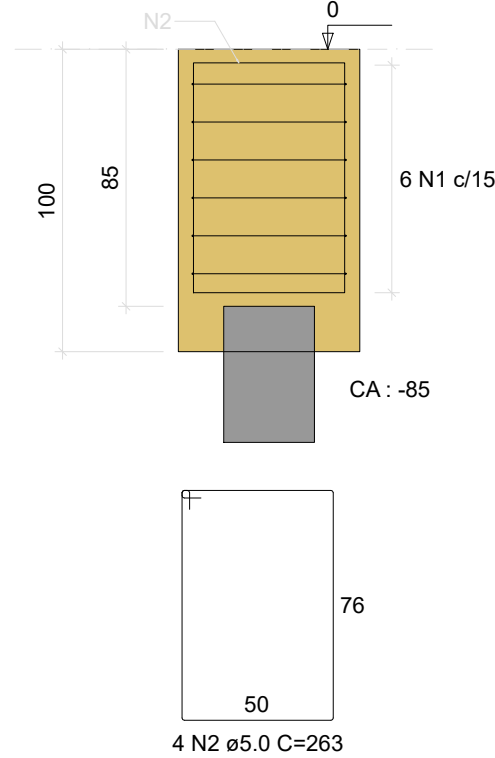
CORTE
ESC 1:25



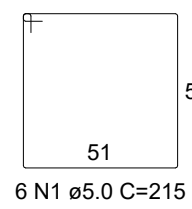
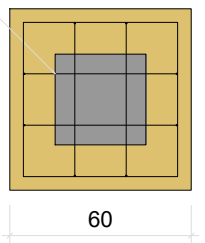
BII-P11
1xR30
PLANTA
ESC 1:25



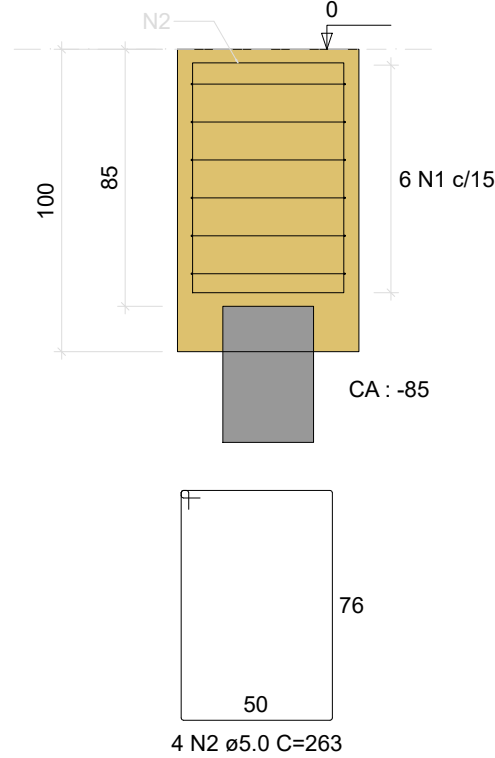
CORTE
ESC 1:25



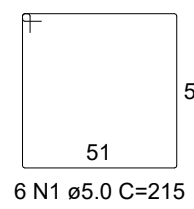
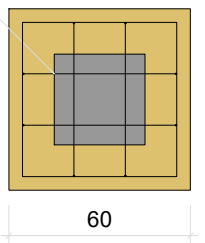
BII-P12
1xR30
PLANTA
ESC 1:25



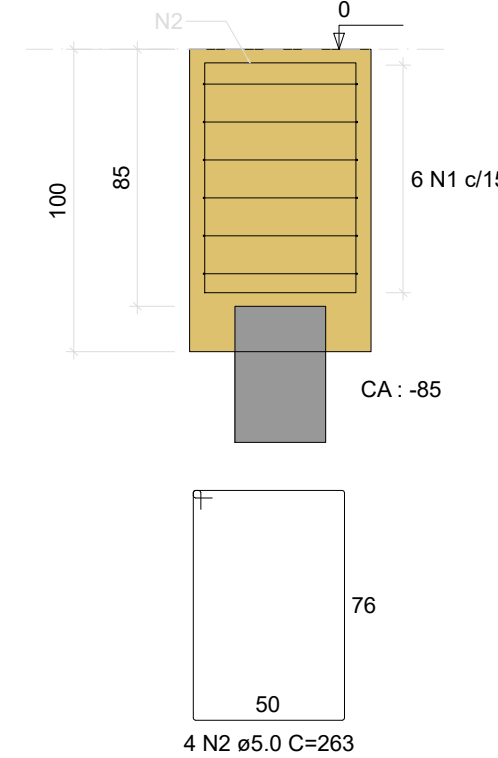
CORTE
ESC 1:25



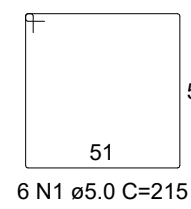
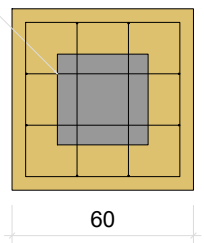
BII-P13
1xR30
PLANTA
ESC 1:25



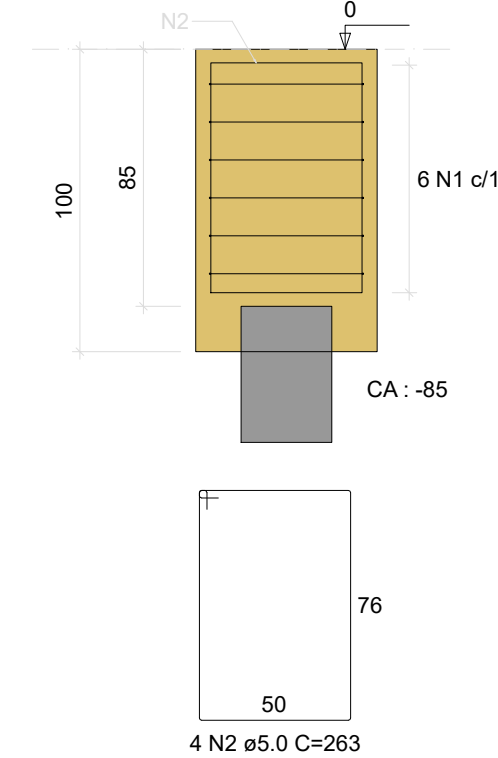
CORTE
ESC 1:25



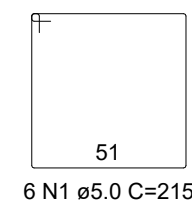
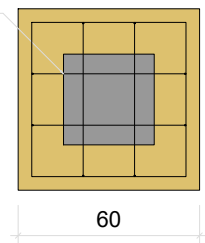
BII-P14
1xR30
PLANTA
ESC 1:25



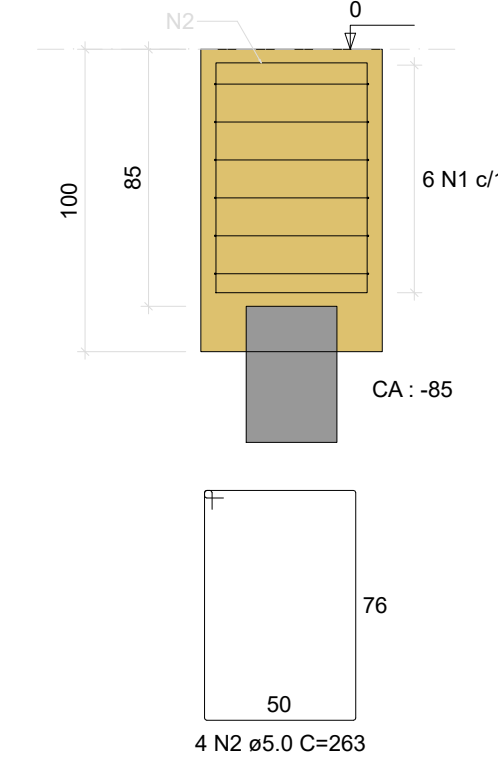
CORTE
ESC 1:25



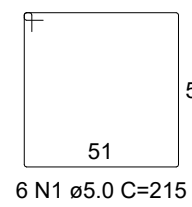
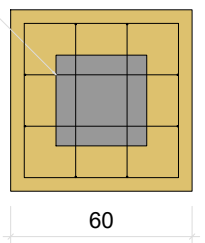
BII-P15
1xR30
PLANTA
ESC 1:25



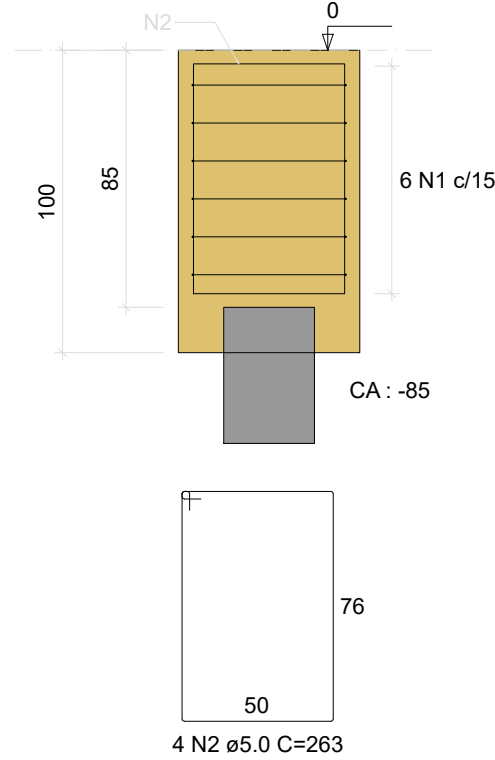
CORTE
ESC 1:25



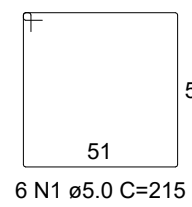
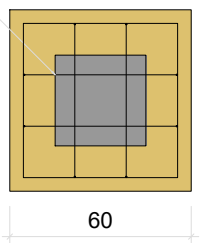
BII-P16
1xR30
PLANTA
ESC 1:25



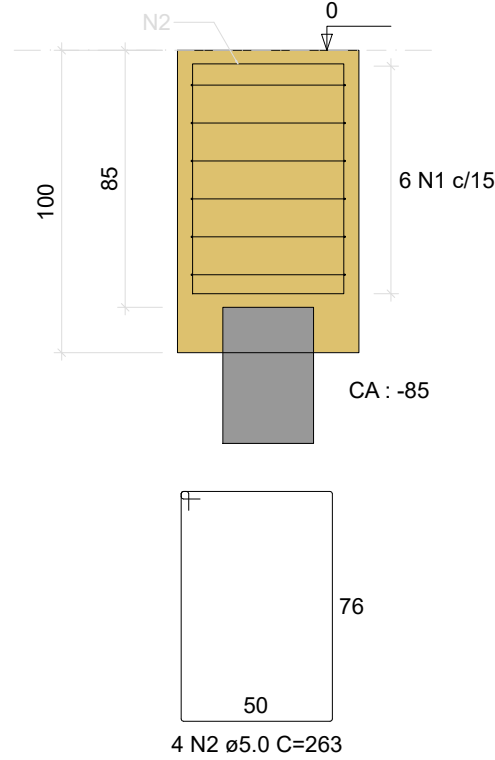
CORTE
ESC 1:25



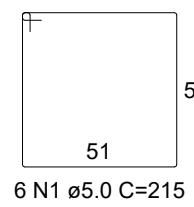
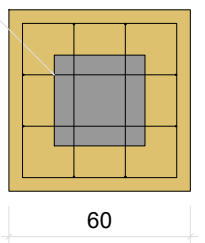
BII-P17
1xR30
PLANTA
ESC 1:25



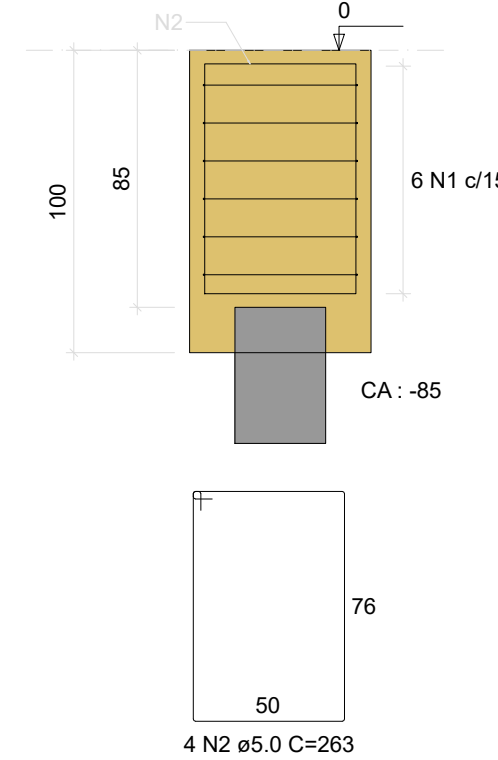
CORTE
ESC 1:25



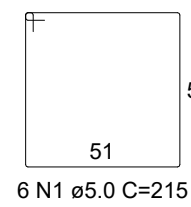
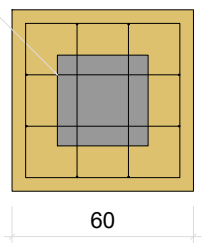
BII-P18
1xR30
PLANTA
ESC 1:25



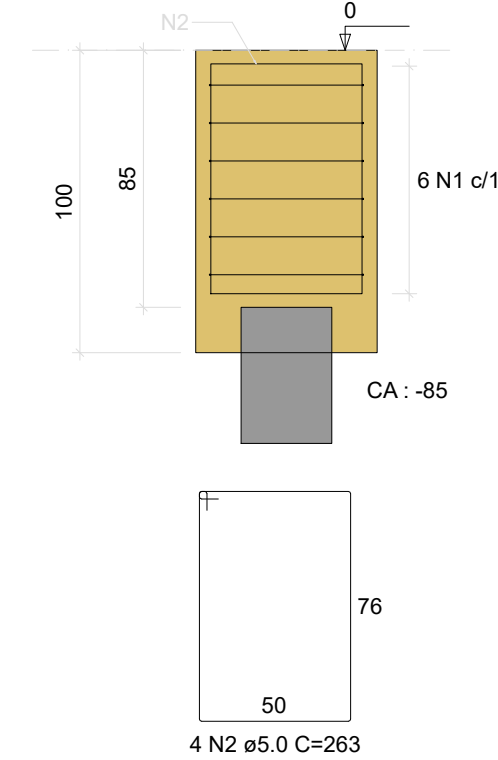
CORTE
ESC 1:25



BII-P19
1xR30
PLANTA
ESC 1:25



CORTE
ESC 1:25



Setor I - SI

Setor II - SII

TODAS AS MEDIDAS E NÍVEIS DEVERÃO SER CONFERIDOS NO LOCAL.

R003			
R002			
R001			
REVISÃO	ALTERAÇÕES	EMISSÃO	RESPONSÁVEL

UNIDADE DE SAÚDE QUINTA DO PORTAL



PREFEITURA MUNICIPAL DE PORTO ALEGRE
SECRETARIA MUNICIPAL DE OBRAS E INFRAESTRUTURA
DIRETORIA DE PROJETOS E OBRAS VIÁRIAS

RESPONSÁVEIS TÉCNICOS PROJETO DE ARQUITETURA: JULIANO FABRO ARQUITETO E URBANISTA CAU.A22875-3 ID. FUNC.: 1609270	PROJETO DE ARQUITETURA: LUIZ PRESTES ARQUITETO E URBANISTA CAU.A23531-4 ID. FUNC.: 270122	PROJETO EXECUTIVO ESTRUTURAL: AMANDA DA CUNHA FIGUEIRA ENGENHEIRA CIVIL CREA.RS193.391 ID. FUNC.: 1606638	COORDENADOR CÉSAR FABRÍCIO BREDA DESENHO AMANDA
--	---	---	--

OBRA US QUINTA DO PORTAL	ÁREA 672.53 m²
ENDEREÇO ESTRADA AFONSO LOURENÇO MARIANTE, Nº 5547 - LOMBA DO PINHEIRO	MUNICÍPIO PORTO ALEGRE/RS
PROJETO EXECUTIVO ESTRUTURAL	ASSUNTO SETOR SII BLOCOS DE FUNDAÇÃO - 01
ESCALA INDICADA	DATA ABRIL/2024
NOME ARQUIVO USQP-2024-EST-PEE.dwg	Nº PRANCHA PE24